

Beyond its aesthetic significance and value in the campus environment, public art at Rowan University fulfills a key element of Rowan's mission—to provide diverse educational experiences to the campus community. The pieces—sculptures, paintings and monuments—can stimulate conversation about the meaning of art and encourage awareness of everyday surroundings.

Taken as a whole, Rowan's public art conveys a sense of identity and marks points in the University's history. Several pieces commemorate a special event or honor extraordinary achievements of members of the Rowan community.

Investing in artistic legacy
Public art at Rowan is funded in two different but equally important ways: designating a percentage of a facilities budget to create or install a piece, and through the support of private donors whose generosity provides a cultural and aesthetic legacy on campus. Both types of investment provide art as a public service for generations to experience and enjoy.

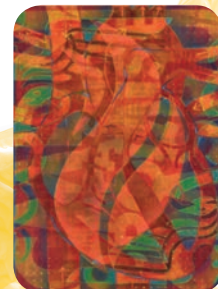


CAMDEN CAMPUS



**DEMETER,
GODDESS OF HARVEST**

Thought to be a reproduction acquired by the First Camden National Bank and Trust Company
Camden Academic Building



SODZO

William Butler, 2016
CMSRU

STRATFORD CAMPUS



THE EASE OF THE DISEASE

Cork Marcheschi, 1995
Academic Center



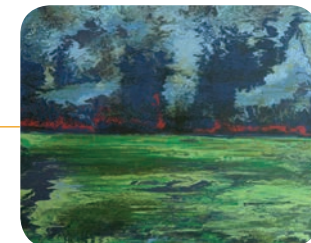
201 Mullica Hill Road
Glassboro, NJ 08028



1 DIANA, GODDESS OF THE HUNT

Thought to be a reproduction acquired by the First Camden National Bank and Trust Company
Camden Academic Building

2



3 RESTORE

William Butler, 2016
CMSRU

4



1 TOUCH

Ralph Helmick & Stuart Schechter, 2004
University Doctors Pavilion

2

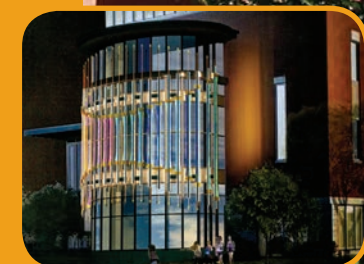


3 MOBILUS VITA

Clyde Lynds, 1995
University Doctors Pavilion



GUIDE TO PUBLIC ART





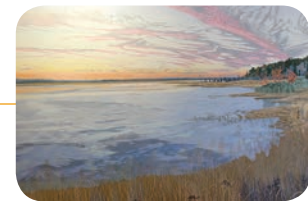
GROWTH # 50

John Ottiano, 1974
Chamberlain Student Center

1

SUNSET OVER WADDING RIVER

Keith R. Jones, 1986
Campbell Library



2

RETURN TO GROVER'S MILL

Cork Marcheschi, 1994
Student Recreation Center

3

THE SOUL'S DISPENSARY

Livio Saganic, 1995
Campbell Library



4

OPEN BOOK

Livio Saganic, 1995
Campbell Library

5

LIGHTWAVE

Ray King, 1995
Campbell Library



6

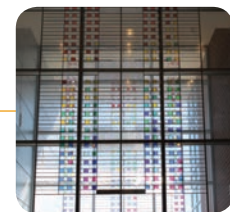
HISTORY OF ENGINEERING

Larry Kirkland, 2002
Rowan Hall

7

GLASSBORO KALEIDOSCOPE

David Wilson, 2005
James Hall



8

FRAME OF LIFE

Douglas Hollis, 2007
Science Hall

9

HENRY ROWAN

Zenos Frudakis, 2012
Savitz Hall



10



ROWAN OWL

Brian Hanlon, 2014
Team House

11



WELCOME GATE ARCH

Brian Hanlon, 2014
Bunce Green

13



DREAMS TAKE FLIGHT

David Boyer, 2015
Holly Pointe Commons

15



OPTICKS

Beth Nybeck, 2016
Engineering Hall

17



THE TEST OF TIME

John E. Bannon, 2017
Crossroads at Robinson Green

19

KNOWLEDGE IS POWER

Zenos Frudakis, 2014
James Hall



12

ENDEAVOR

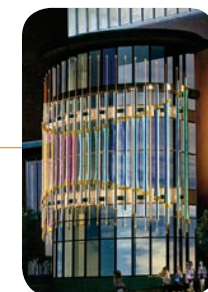
Marvin Creamer
and John Collins, 2015
Esbjornson Gym



14

THRESHOLD

Ed Carpenter, 2016
Business Hall



16

VECTOR SPACE

Carolyn Braaksma
and Brad Kaspari, 2016
Engineering Hall



18